

BUCKINGHAMSHIRE COUNCIL
Education Department

Highworth Combined School & Nursery

HIGHWORTH CLOSE HIGH WYCOMBE BUCKS. HP13 7PH

Tel. (01494) 525534

Email office@highworthcombined.co.uk



Newsletter: 9th May 2025

Issue: 25

Letters sent home & e-School messages this week: Summer Newsletter (Nursery), Summer Newsletter (Reception), Essential Information for Y5 Parents/Carers, Y6 SATs

Dear all

Apologies that this is the first newsletter of the new term; it's been a bit of a fragmented start with all the bank holidays etc. No news is good news definitely applies here as we have got off to a good start with children very quickly settled back in to the familiar well-established routines.

We started more work on routines and expectations this week with an assembly to launch the next phase of implementation of the 'Highworth Way', our curriculum for behaviour. Children were introduced to Fantastic Walking (how we move around school safely and respectfully), and our expectations of manners and behaviour during playtimes. Following on from assembly, all classes will have 6 further lessons on expectations so that there is complete clarity. Throughout the summer term, we will support and guide children to achieving the expectations so that habits are embedded for all those returning in September.

I took assembly for Key Stages 1 and 2 today to discuss the current concerning escalation in conflict between Pakistan and India. The purpose was to dispel misconceptions, address concerns, but most importantly to remind all that we need to be kind and respectful to those in our community with links to either country, despite the worries we share. Your support, as ever, with reinforcement of the message of kindness and tolerance is appreciated.

Best wishes for an enjoyable weekend

Clare Pankhania

ATTENDANCE

To report your child's absence please telephone and leave a message or send an email to:

reception@highworthcombined.co.uk

SCHOOL ATTENDANCE TARGET IS 96%

BEST ATTENDANCE: 100%
(CLASS 5K)
EXCELLENT

WHOLE SCHOOL ATTENDANCE:
96.7%

DATES FOR YOUR DIARIES

Monday 12th May to Thursday 15th May

End of KS2 SATs

Thursday 15th May

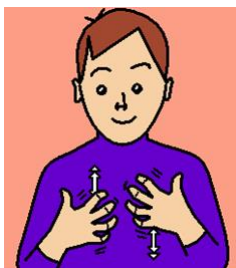
9.30am: Sex Education Presentation via Teams for parents of children in Y4 – Y6

Friday 16th May

Y3 Trip to the Natural History Museum.

PARENT ZONE

SIGN OF THE WEEK



excited

Follow this link to see how to sign 'excited' in BSL

[British Sign Language BSL Video Dictionary - excited](#)

THE PARENT'S PORTAL – a free online support tool for Buckinghamshire parents

To provide early help and guidance and an online community of support, Buckinghamshire Council have partnered with specialist local charity Autism Early Support, to offer parents unlimited access to The Parent's Portal.

This is a self-guided learning tool, designed for parents of children aged 2-17 years who:

- Have noticed differences in their child and they're exploring neurodivergence.
- Have Googled, 'is my child autistic?' or 'what is ADHD?'
- Have an autistic child(ren).
- Are awaiting a neurodevelopmental assessment.

Scan the QR code to register or visit



<https://portal.autismearlysupport.org.uk/bucks-registrations/>

Using the Parent's Portal

The Parent's Portal by AES is an online resource that contains:

- Resources to watch and read- A multimedia library of information available to view and download, available 24/7, covering topics such as reasonable adjustments to school
- distress, neurodiversity and SaLT, and use of medication.
- Live workshops and parent support groups - Interactive sessions on key topics, bookable in advance, and delivered by speakers with lived experience and professionals
- in the field.
- Discussion forums - Exchange ideas and perspectives with parents and practitioners.

Recent feedback from parents:

94% of parents felt they had a better understanding on topics after attending workshops. 82% felt better equipped to support their child or young person.

The resources are split into four sections:

- Understanding my child
- Supporting my child with education
- Supporting my child at home
- Family relationships and sibling support

No referral is required for families to use the Parent's Portal, and registration with Autism Early Support is simple and straightforward."