

Highworth Combined School & Nursery

HIGHWORTH CLOSE HIGH WYCOMBE BUCKS. HP13 7PH

Tel. (01494) 525534

Email office@highworthcombined.co.uk



Newsletter: 11th July 2025

Issue: 30

Letters sent home & e-School messages this week: Parent/Carer Survey, Youlbury Presentation (Y4), Digital Childhood Project, Transition to Y1 (Rec), Pirate Day, (Rec)

Dear all

As always, learning remains our top priority, with the curriculum continuing until term's end. This week, pupils also engaged in enriching extracurricular activities:

- **Year 1** participated in a Bollywood dance workshop through the Chiltern Area Partnership (CAP), culminating in an impressive final performance.
- **Reception and Nursery** parents attended a school readiness workshop hosted by the Family Learning Team. This collaboration, initiated this year, has been well-received, and we plan to offer similar sessions next year on topics like supporting play at home, reading for fun, and learning through cookery.
- We hosted a **Children's Services locality hub meeting**, reinforcing our commitment to collaborative safeguarding practices.
- **Year 2** students took part in a CAP multi-skills sports event at Manor Farm Infant School, enjoying the opportunity for competitive sports.
- **Year 5** attended a computing workshop at Holmer Green Secondary School, returning enthusiastic about coding and the computing curriculum.
- **Reception** celebrated Pirate Day with creative costumes and activities, integrating their half-term learning.

We're also proud to share our best-ever Year 6 SATs results shown below. This success is due to the hard work of your fabulous children along with the skill and dedication of our expert teaching and support team. Most of all it means that children are leaving us well prepared for their next school and that we continue to do what we set out to: provide the best possible primary education for every pupil.

Best wishes for a happy weekend

Clare Pankhania

% of pupils achieving the 'Expected Standard' (EXS) and 'Greater Depth Standard' (GDS) in Reading, Writing and Maths at the end of KS2					
	2019	2022	2023	2024	2025
Highworth EXS +	65.0%	72.0%	77.0%	80.0%	87%
National EXS+	65.0%	59.0%	59.0%	61.0%	62%
Highworth GDS	8.0%	5.0%	8.0%	12.0%	8%
National GDS	11.0%	7.0%	8.0%	8.0%	

% of pupils achieving the 'Expected Standard' and 'Greater Depth Standard' in Reading					
	2019	2022	2023	2024	2025
Highworth EXS +	73.0%	82.0%	83.0%	88.0%	92%
National EXS+	73.0%	75.0%	73.0%	74.0%	75%
Highworth GDS	32.0%	35.0%	42.0%	37.0%	47%
National GDS	27.0%	28.0%	29.0%	28.0%	

% of pupils achieving the 'Expected Standard' and 'Greater Depth Standard' in Writing					
	2019	2022	2023	2024	2025
Highworth EXS +	73.0%	81.0%	88.0%	85.0%	92%
National EXS+	78.0%	69.0%	71.0%	72.0%	72%
Highworth GDS	10.0%	5.0%	10.0%	12.0%	8%
National GDS	20.0%	13.0%	20.0%	13.0%	

% of pupils achieving the 'Expected Standard' and 'Greater Depth Standard' in Maths					
	2019	2022	2023	2024	2025
Highworth EXS +	92.0%	82.0%	87.0%	86.0%	93%
National EXS+	79.0%	71.0%	73.0%	73.0%	74%
Highworth GDS	45.0%	42.0%	38.0%	51.0%	47%
National GDS	27.0%	23.0%	24.0%	24.0%	

ATTENDANCE

To report your child's absence please phone and leave a message or send an email to:

reception@highworthcombined.co.uk.

SCHOOL ATTENDANCE TARGET IS 96%

BEST ATTENDANCE: 98.7%
(CLASS 4N)

WELL DONE

WHOLE SCHOOL ATTENDANCE:
94.1%

DATES FOR YOUR DIARIES

Wednesday 16th July

7pm: Year 6 Production (tickets required)

Thursday 17th July

Y2 Trip to Mop End

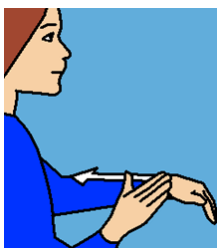
7pm: Year 6 Production (tickets required)

Friday 18th July

9am: Reception Class Assembly –
parents/carers of Reception children are
invited

Annual School Reports to Parents/Carers

SIGN OF THE WEEK



Follow this link to see how to sign 'different' in BSL

<https://www.signbsl.com/sign/slow>

slow